

PORTABLE ENERGY DATALOGGING  
THE WAITING IS OVER.....

# SPC PRO

- ✓ **Low Cost**
- ✓ **Foolproof Hook-Up**
- ✓ **Flex CTs as Standard**
- ✓ **Fast USB2 Download**
- ✓ **PowerPackPro Software**
- ✓ **£995.00 Complete!**



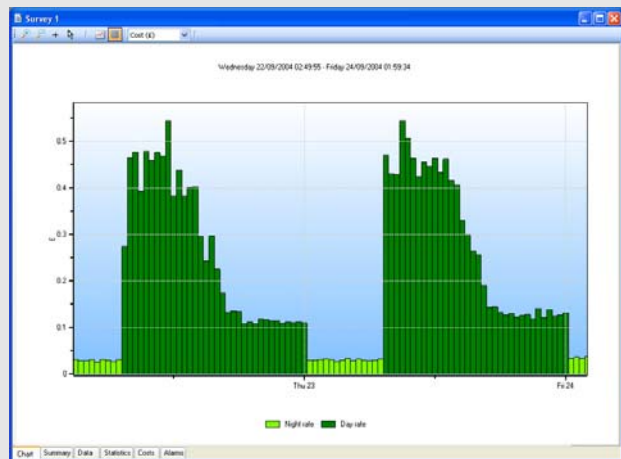
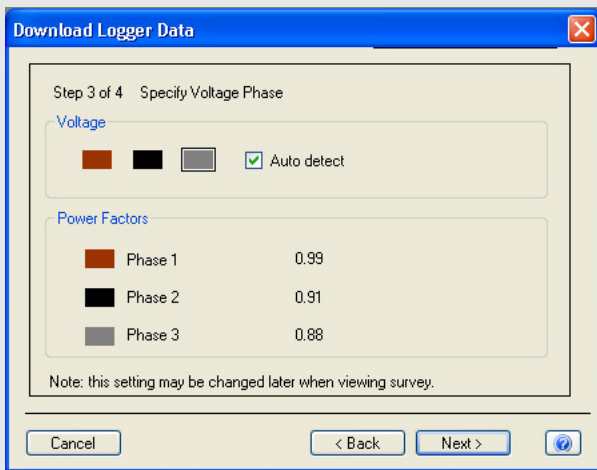
The SPCPro is our latest development in non-invasive 3 phase data logging, and it makes the job simpler and safer than ever before. Based on the well-proven “3 currents, 1 voltage” hook-up, the only voltage connection it needs is a standard 13A wall socket. Current measurement is via fully isolated flexible hoop CTs which makes the SPCPro incredibly safe to use. The unit is also very easy to set up and connect and requires no detailed knowledge of electrical systems from the operator. It is light and compact, but also tough and water resistant to withstand years of professional use.

Measurement performance is second-to-none in its class, utilising an automatic ‘autorange’ feature which maintains remarkable accuracy from levels as low as 1A, all the way to 2000A - with no manual range setting required. Best of all, the sophisticated on-board electronics and dedicated PC software use a unique Elcomponent algorithm to ensure that power and energy (kWh) values are correctly calculated every time! Programming and download is via a new version of PowerPackPro software, and hi speed USB connection, so data transfer is fast despite the large memory capacity.

The SPCPro looks the part too... The sleek piano black case is complemented by a cool blue LCD display, the high quality Ampflex™ flex hoop CTs are connected to the unit via a neatly finished single cable so tangled wires are banished, and the kit is supplied in a bespoke zip case to keep everything tidy

The SPC Pro is incredibly easy to hook-up – no prior set-up is required unless the data storage rate needs changing, so normally it’s a case of clipping on the flex hoops, plugging in the power lead and pressing the start button! Download is equally easy – simply plug the USB lead into your PC and our PowerPackPro software will find the logger automatically and guide you through a foolproof sequence to ensure that accurate results for voltage, current, power factor, kilowatts and kilowatt hours are configured for immediate viewing. The instrument uses a completely secure and non-volatile ‘flash’ memory and has its own back-up for its on-board clock. It also features a powerful integral battery for stand-alone use allowing it to be used as a “current only” logger for up to two weeks where a mains supply is not available.

[www.spcpro.co.uk](http://www.spcpro.co.uk)



## PowerPackPro

**Integral Graphing Package  
Automatic Energy Costing**

**Multi-Rate Tariffs  
Automatic Reports**

PowerPackPro is more than just another data logger software package. This one is designed so that energy managers and engineers can create effective graphs and reports instantly, and **save carbon, money and energy from day 1**.

Specifically created for the SPC Range, PowerPackPro integrates seamlessly with the unit via a hi-speed USB connection with auto-sensing built-in. Simply plug the logger into the PC and the software will link to it automatically within seconds!

PowerPackPro is a 'task oriented' package, so even if you are not an expert in electrical energy it will always guide you in the right direction so that you will achieve accurate reporting first time, every time. It provides full set-up and user-control for the SPCPro allowing you to define your survey period and/or data storage rate as well as providing a battery condition indicator and clock set function. The memory can be configured to "stop when full" or "wrap" for continuous logging if desired. The software also looks after your data, and warns before deleting or resetting any recorded values.

PowerPackPro does a lot more than simple graphing. The graphs are fully 'zoomable' in both axes, and have automatic scaling so your results are always effectively presented. Our unique 'Data Logging' wizard ensures that the energy values (kWh) that are derived from the SPC Pro are always as accurate as possible, and also includes all relevant set-up information on any reports that are created. PowerPackPro's unique phase sensing capability automatically evaluates all the downloaded phase angle values to identify the voltage phase that was used for the survey in question, thus ensuring that the PF and kWh values are correctly presented.

	Specification	Notes
Power Supply	175-300 VAC / Internal Battery	
Inputs	3 current, 1 x voltage	
CTs	0-275 VAC	
Voltage Measurement	0-275 VAC	
Current Measurement	2-2000A (autoranging)	
Storage Rate	1 Second to 30 Minutes	Set via software
Sampling Rate	32 samples per cycle	
Storage Records	65000 Min/Max /Average	
Battery Life	14 Days from fully charged	
Download	Via USB	
Dimensions (mm)	80h x 120w x 180l	
Operating Temperature	-20 to 50°C	
Accuracy:	±0.2% range for voltage ±0.1A < 20A ±1A < 200A ±10A < 2000A	